

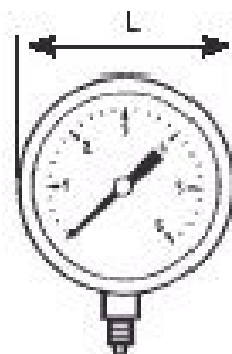
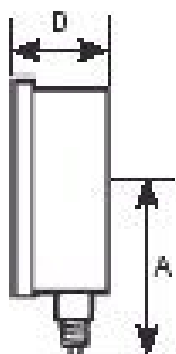
## Art. 3822 N MANÓMETRO DE CONEXION RADIAL CON GLICERINA Art.3822 N PRESSURE GAUGE LOWER MOUNT CONNECTION WITH GLYCERINE

### Características

- 1- Tamaño :  $\varnothing 63 - 2\frac{1}{2}''$
- 2- Manómetro con conexión: radial inferior de  $1/4''$  NPT
- 3- Con **Glicerina**
- 4- Caja en **acero inoxidable**
- 5- Tubo "Bourdon" y racor en **Latón DIN 1776**
- 6- Cuadrante en blanco; Escala en negro
- 7- Visor en acrílico
- 8- ASME B40.1-1991 B GRADE

### Features

- 1- Size:  $\varnothing 63 - 2\frac{1}{2}''$
- 2- Gauge with connection: Lower mount of  $1/4''$  NPT
- 3- With **Glycerine**
- 4- Box in **stainless steel**
- 5- Tube " Bourdon " and connection in **Brass DIN 1776**
- 6- Quadrant in white; scale in black
- 7- Window in acrylic
- 8- ASME B40.1-1991 B GRADE



Ref	Escala / Scale		Dimensiones/Dimensions (mm)				Peso/ Weight (g)
	bar	Psi	A	L	D	F	
3822 002	0 - 2.5	0 - 40	57	68	28	14x14	205
3822 004	0 - 4	0 - 60					
3822 006	0 - 6	0 - 90					
3822 010	0 - 10	0 - 150					
3822 016	0 - 16	0 - 240					
3822 025	0 - 25	0 - 400					
3822 040	0 - 40	0 - 600					
3822 060	0 - 60	0 - 900					
3822 100	0 - 100	0 - 1500					